

# Round Trade Lakes: 2019 AIS Management Review and Grant Update

LEAPS, September 2019



# 2018, 19, and 20 ACEI Grant Tasks

- \* CLP and EWM Management Planning
- \* CLP and EWM Management
- \* Pre/Post-treatment aquatic plant surveys
- \* CLP bedmapping
- \* Beetle Rearing and Release
- \* Fall EWM bedmapping
- \* Physical removal of EWM (and purple loosestrife)
- \* Native Aquatic Plant Reintroduction (Long Trade)
- \* AIS Monitoring
- \* Water Quality Monitoring
- \* Newsletters
- \* Clean Boats Clean Waters
- \* Public Education Events
- \* Fall Zebra Mussel Dock Out Day
- \* General Project Support

# 2018 CLP and EWM Management

- \* **Long Trade Lake**

- \* 5 beds of CLP and EWM totaling 6.8 acres
- \* Endothall and 2,4-D applied May 29, 2018

- \* **Round Lake**

- \* 4 beds of EWM totaling 8.86 acres (no CLP)
- \* 2,4-D applied on May 29, 2018

- \* **Little Trade Lake**

- \* 5 beds of CLP and EWM totaling 6.7 acres
- \* Endothall, 2,4-D, and diquat applied on May 29, 2018

- \* **Big Trade Lake**

- \* 20 beds of EWM totaling 12.25 acres (no CLP)
- \* Liquid and granular 2,4-D

# 2018 Fall EWM Survey Results

## \* Long Trade Lake

- \* Only 8 EWM plants found in the lake
- \* One EWM bed in the channel
- \* 98% decline from fall of 2017

## \* Round Lake

- \* 7 EWM beds totaling 2.18 acres
- \* 14 individual EWM plants
- \* 21% decline from fall of 2017

## \* Little Trade Lake

- \* 4 EWM beds totaling 1.4 acres
- \* 44 individual EWM plants
- \* 28% increase from fall of 2017

## \* Big Trade Lake

- \* 26 EWM beds totaling 1.34 acres
- \* 145 pioneering EWM plants
- \* 55% decline from fall of 2017

# EWM is all over in Big Trade Lake

## Eurasian water-milfoil (*Myriophyllum spicatum*)

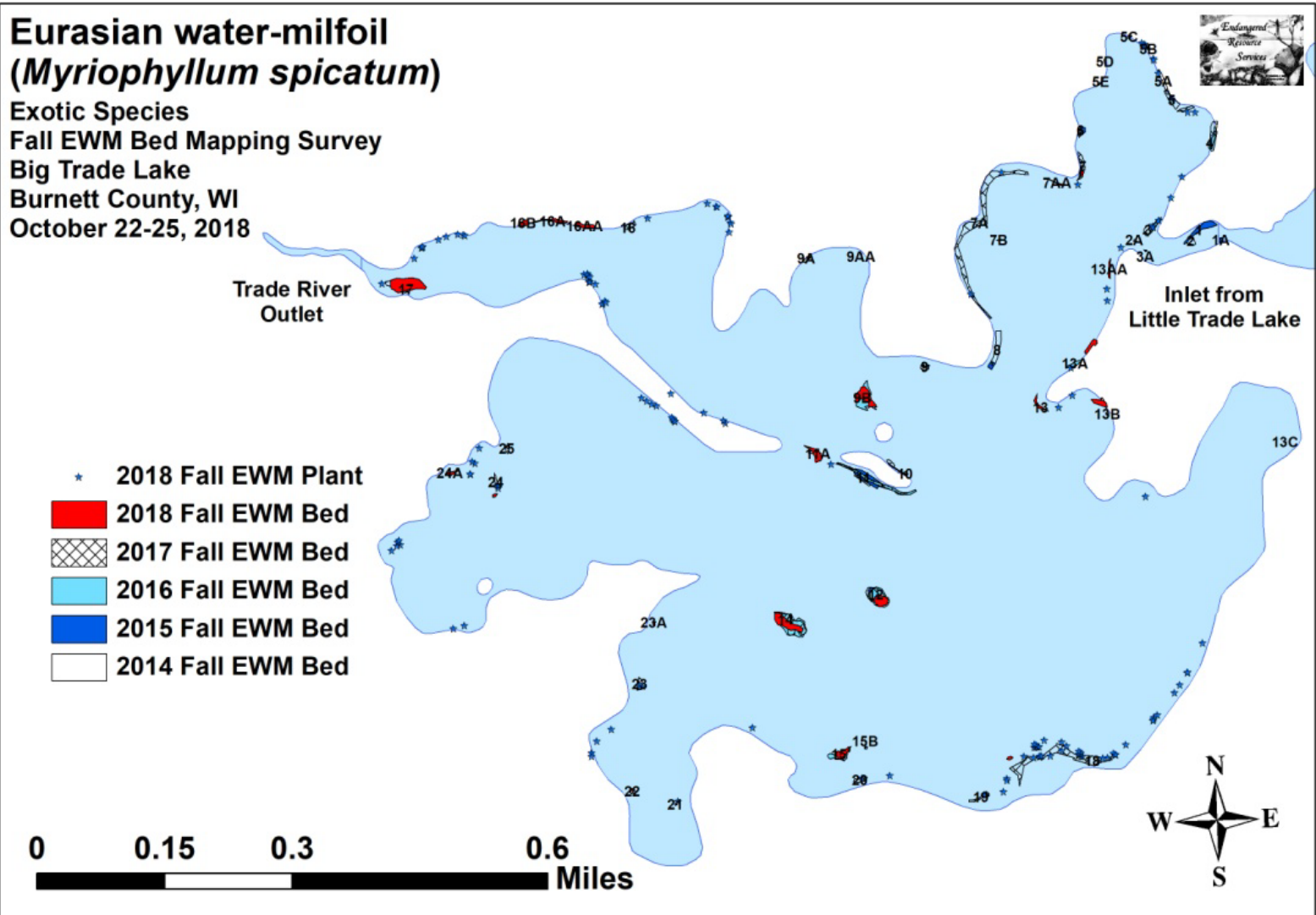
Exotic Species

Fall EWM Bed Mapping Survey

Big Trade Lake

Burnett County, WI

October 22-25, 2018



# 2019 CLP and EWM Management

- \* **Long Trade Lake**

- \* 5 beds of CLP totaling 3.61 acres (no EWM)
- \* Endothall applied May 28, 2019

- \* **Round Lake**

- \* 4 beds of CLP totaling 3.0 acres (no EWM)
- \* Endothall applied on May 28, 2019

- \* **Little Trade Lake**

- \* 4 beds of CLP totaling 5.84 acres (no EWM)
- \* Endothall and diquat applied on June 4, 2019

- \* **Big Trade Lake**

- \* 6 beds of EWM totaling 3.67 acres (no CLP)
- \* Liquid 2,4-D

# 2019 Fall EWM Survey Results

## \* Long Trade Lake

- \* Not done yet, but expect to find little EWM

## \* Round Lake

- \* Beds by the outlet and along the east shore, but have not been quantified in a fall survey yet.

## \* Little Trade Lake

- \* EWM bed along the northeast shore, otherwise very little EWM, but has not been quantified in a fall survey yet.

## \* Big Trade Lake

- \* Several areas with small beds of 0.10 or smaller
- \* Rock islands and other treated areas in 2019 look to have had positive results
- \* Lots of pioneering plants all over



# Purple Loosestrife on Round Lake

\* Rearing Galerucella Beetles (2018)



\* Releasing Galerucella Beetles on Round Lake





**2019 – No Beetle Rearing, but completed a survey with physical removal on Round and Big/Little Trade**

**2020 – Beetle Rearing will again be done with a release site planned for Big Trade Lake**



# Property Owner Removal of Purple Loosestrife



It's pretty, I know ... but don't protect or save it! Please remove it, at least before it goes to seed!!



# Physical Removal of EWM

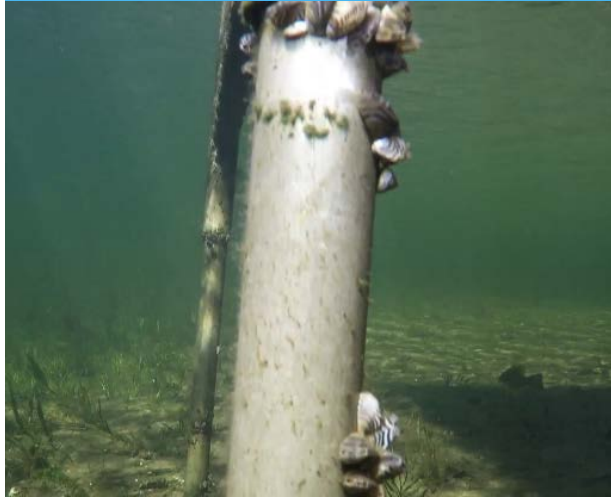
- \* Not hard to do
- \* Cheaper than herbicides
- \* Accumulates volunteer time
- \* EWM often in shallow water and found as individual small plants
- \* Use a rake, double sided rake, or pull by hand
- \* Be careful to get as much of the plant as possible
- \* Dispose of on upland away from the lake





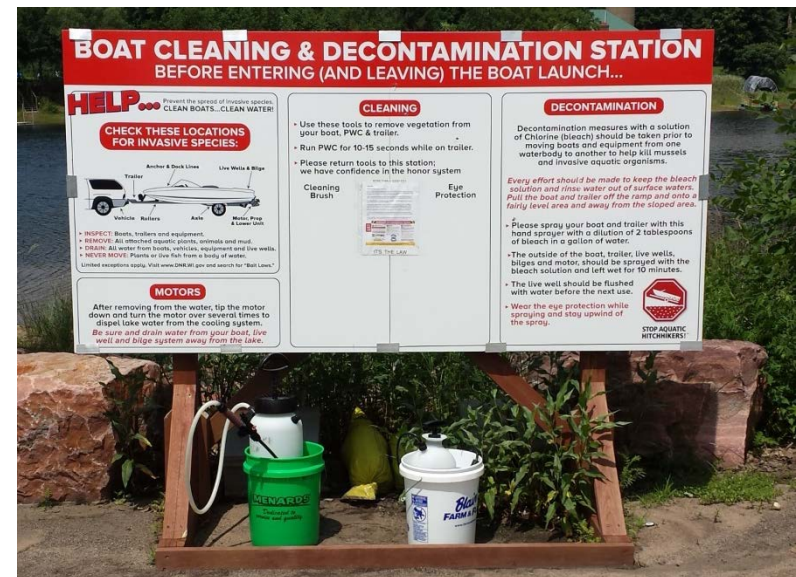
# Zebra Mussel Dock Out Day

Big McKenzie Lake, Burnett Co. 7/4/2019



# 2019 Clean Boats Clean Waters

- \* Long Trade – 88.25 hours
- \* Round – 61.25 hours
- \* Big Trade NW – 86.5 hours
- \* Big Trade East – 148.35 hours



# Native Plants Re-introduction in Long Trade Lake

- \* Approximately 45 bundles of northern watermilfoil turions introduced in fall 2018
- \* At least that many more will be put in later in fall of 2019







**Questions?**